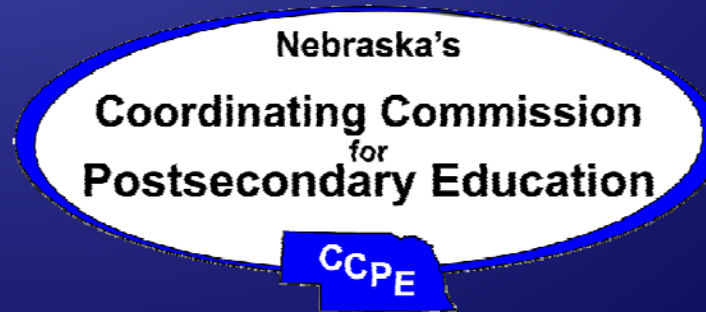


Section B: Degrees and Other Awards

**1998-2008 FACTUAL LOOK AT
HIGHER EDUCATION IN
NEBRASKA**

Reporting information from the Integrated Postsecondary Education
Data System (IPEDS)

Presented June 18th, 2009



Background

- ◆ The Coordinating Commission is required by statute to report IPEDS data.
- ◆ The Commission fulfills this responsibility through the publication of the *Factual Look* and other reports, such as the *Nebraska Higher Education Progress Report*

Background

- ◆ The *Factual Look* is generally used by legislative staff, institutional researchers, and Commission staff.
- ◆ This publication provides a statistical analysis.
- ◆ It does not answer the “Why?” questions.

Background

- ◆ Prior to the analysis and publication of IPEDS data collected in fall 2005, the *Factual Look*:
 - ◆ Focused on only one year's worth of data.
 - ◆ Summarized data from the for-profit/career schools separately from the data submitted by the public and independent institutions.
- ◆ Since 2005, the *Factual Look*:
 - ◆ Focuses on ten-year trend analyses.
 - ◆ Provides a statewide analysis, which includes the for-profit/career schools.

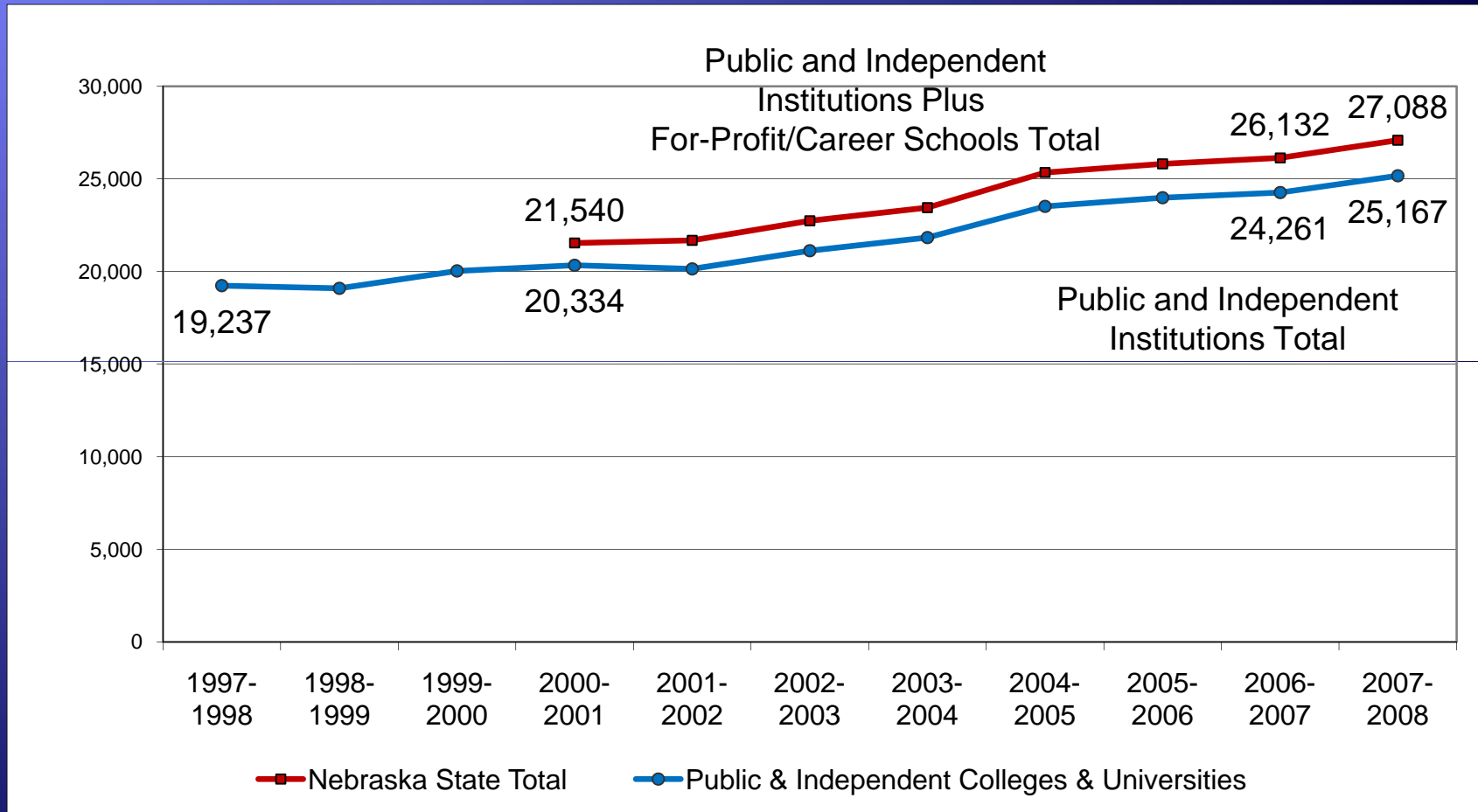
Features of the *Factual Look*

- ◆ The *Factual Look* now consists of three parts:
 - ◆ Section A: Enrollment
 - ◆ Section B: Degrees and Other Awards
 - ◆ Section C: Faculty and Salaries

Features of the *Factual Look*

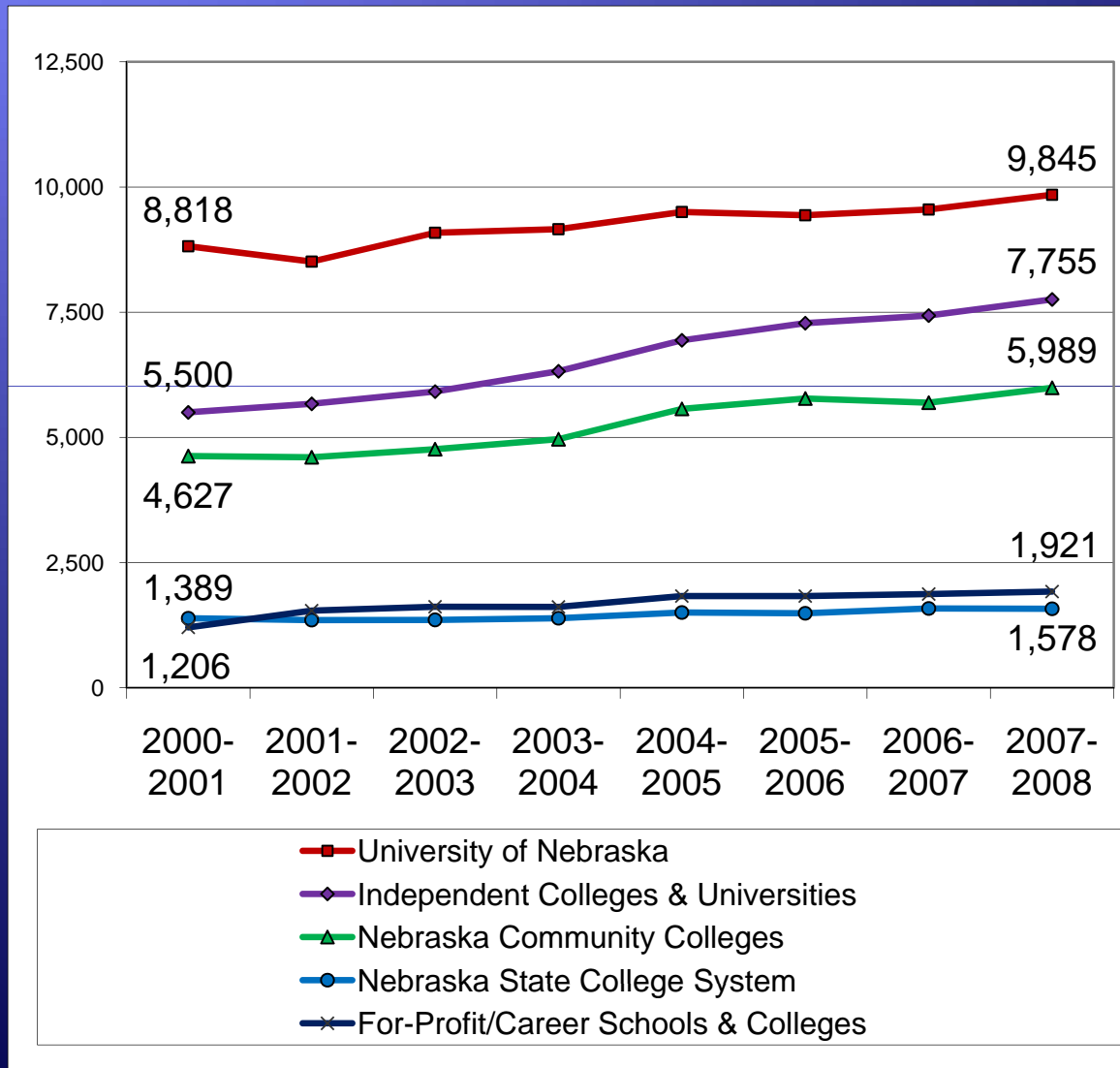
- ◆ It is now primarily an online publication.
- ◆ Data are summarized in charts that are colored for easier readability and interpretation.
- ◆ Excel spreadsheets of the corresponding data are available for downloading.

Total Number of Degrees, Certificates and Diplomas



- ◆ Since 2000-01, the number of degrees and other awards conferred statewide has increased 25.8% or 3.7% per year.

Total Number of Degrees and Other Awards by Sector



Over the past 7 years:

NU up 12%

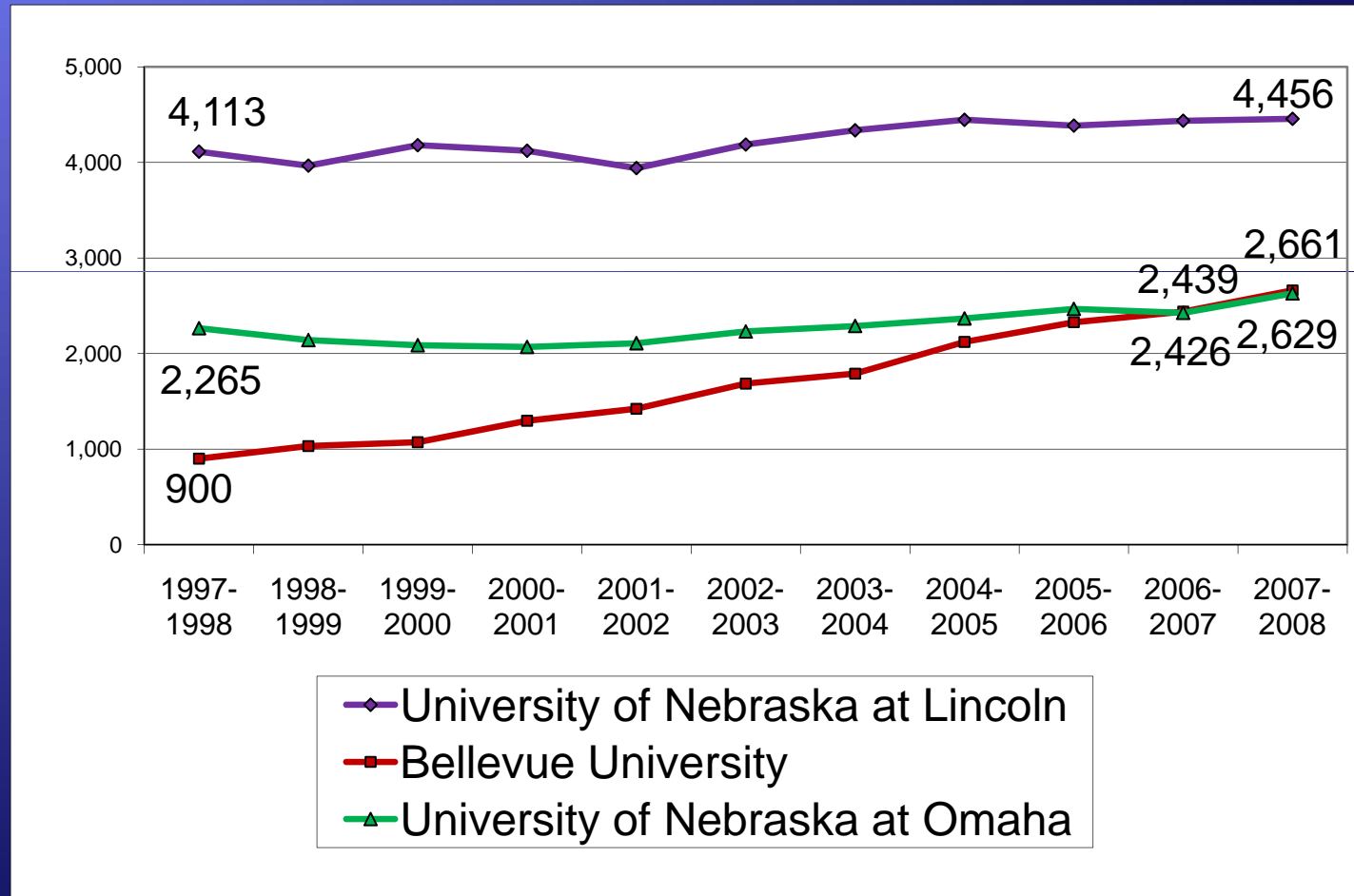
Independents up 41%

NE CCs up 29%

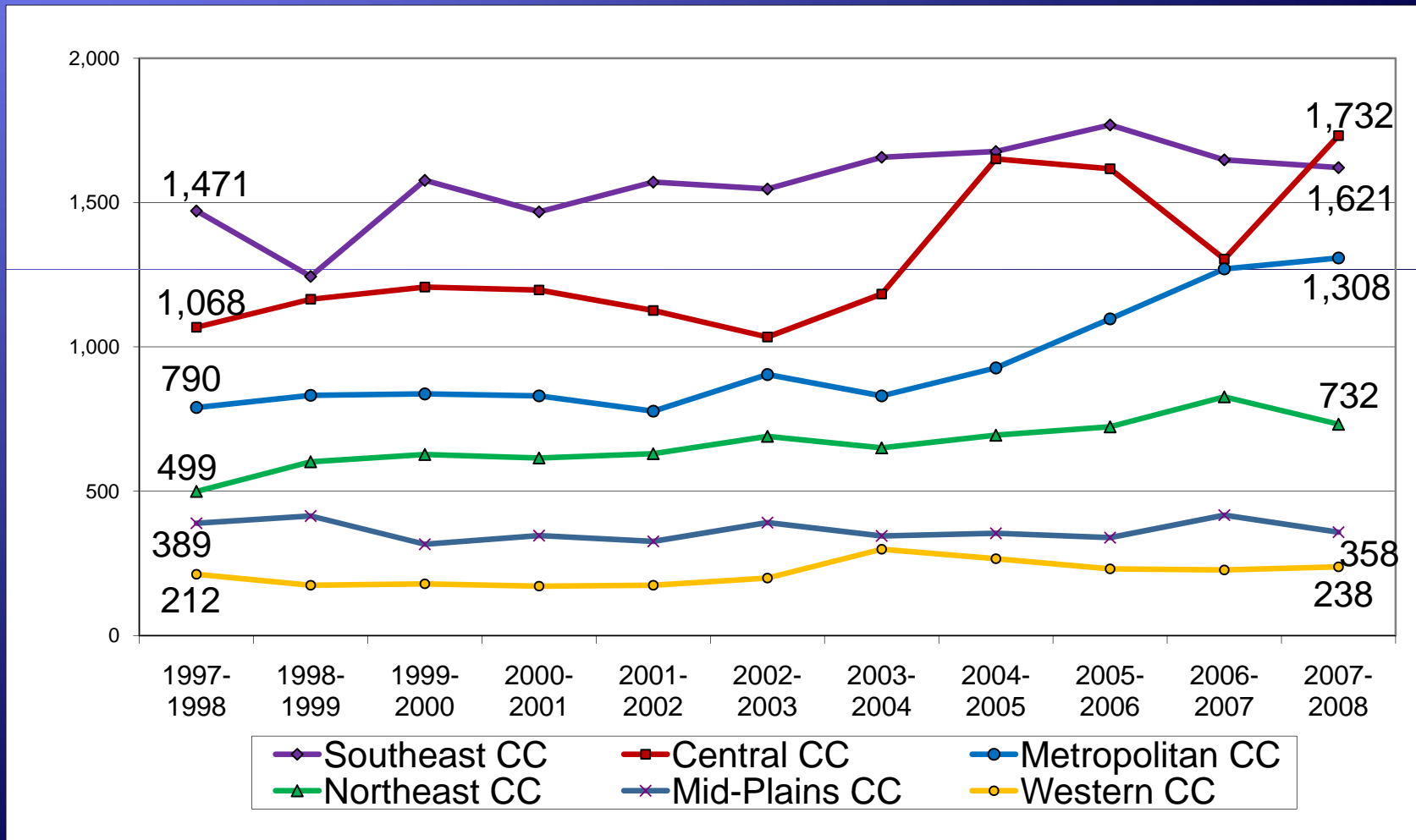
For-Profits up 59%

NSCS up 14%

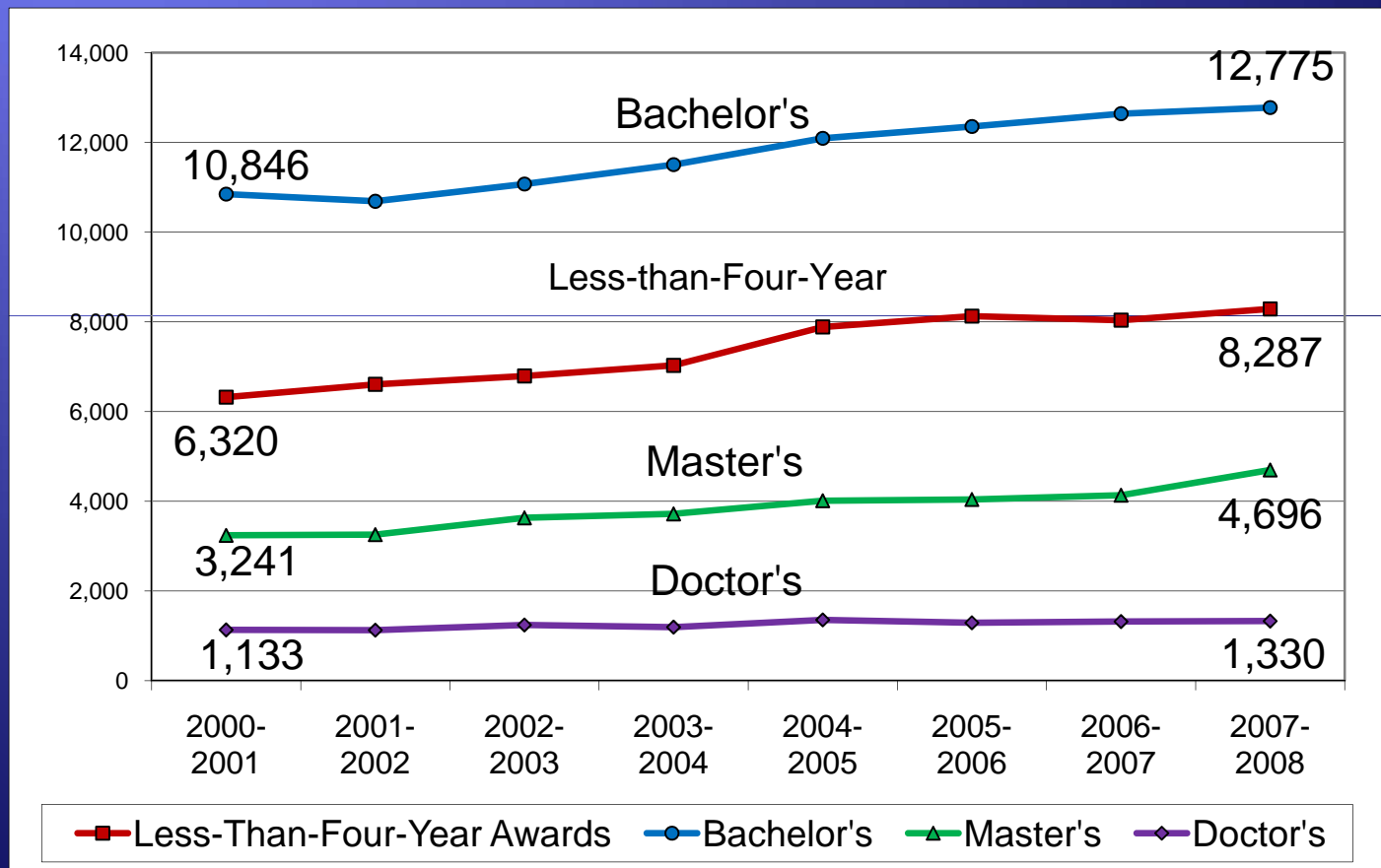
The Three Institutions Awarding the Highest Numbers of Degrees



Nebraska Community Colleges Numbers of Degrees & Awards by College



Nebraska Total Number of Degrees and Other Awards by Level



Up 18%

Up 31%

Up 45%

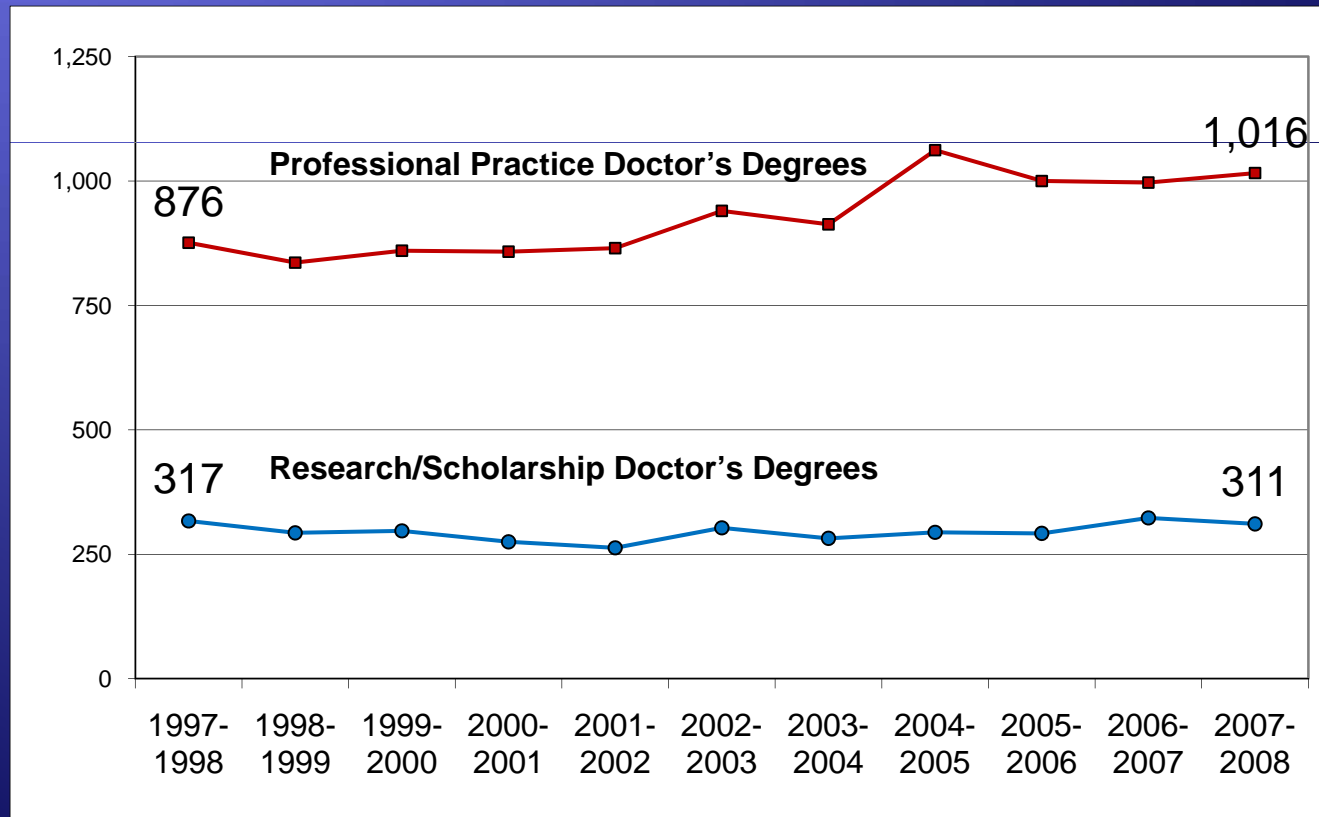
Up 17%

- ◆ Undergraduate degrees account for 78% of the degrees awarded in Nebraska, but the highest rate of growth has been at the master's level.

Important Changes in the Definition and Classification of Doctor's Degrees

- ◆ The NCES-IPEDS has eliminated the first-professional degree category.
- ◆ All doctoral degrees, including those formerly classified as “first professional” are now classified into two categories:
 - Doctor's degree – research/scholarship
 - Doctor's degree – professional practice

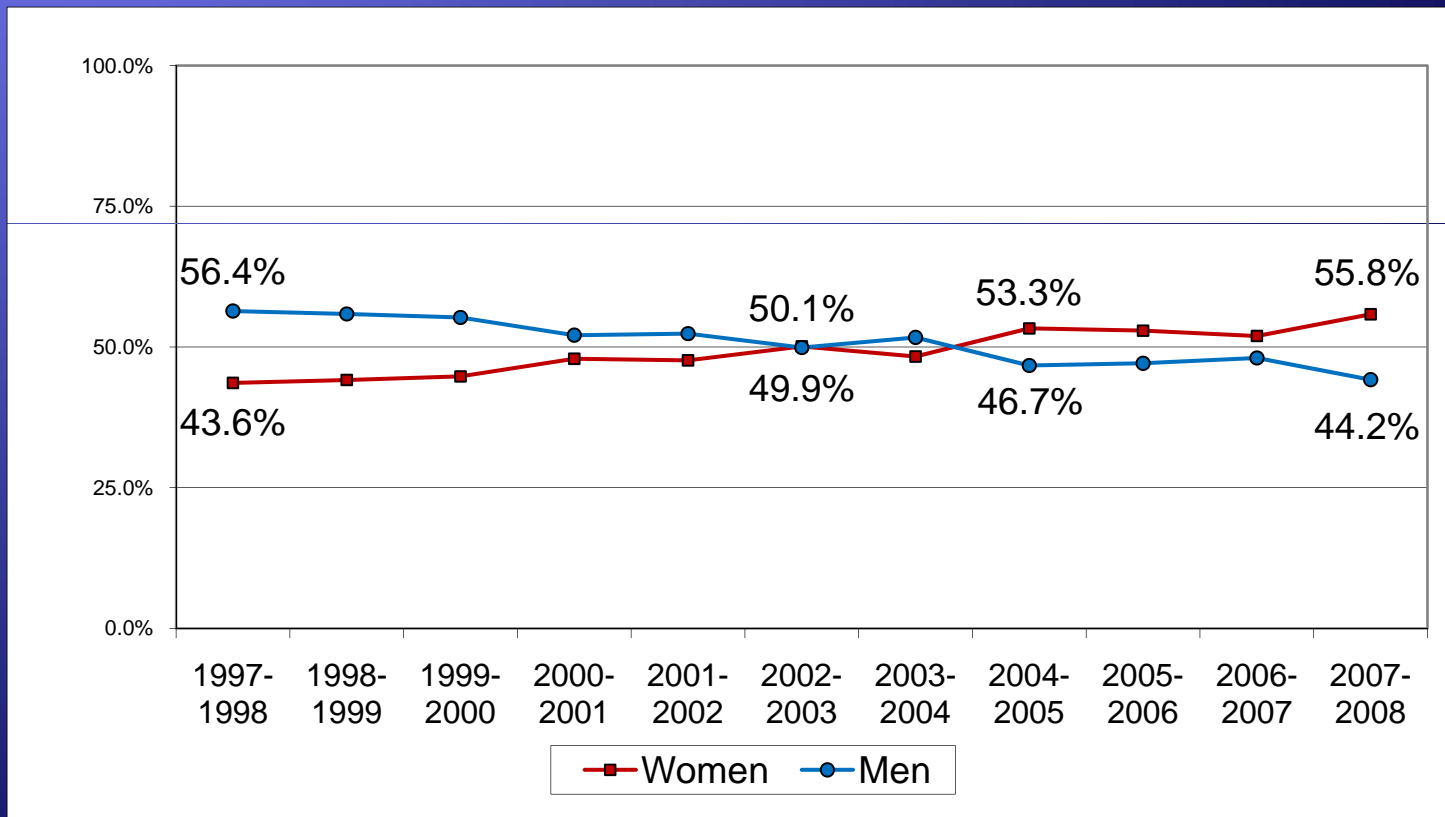
Total Number of Professional Practice and Research/Scholarship Doctor's Degrees Conferred by UNL, UNMC, Creighton University, and College of Saint Mary



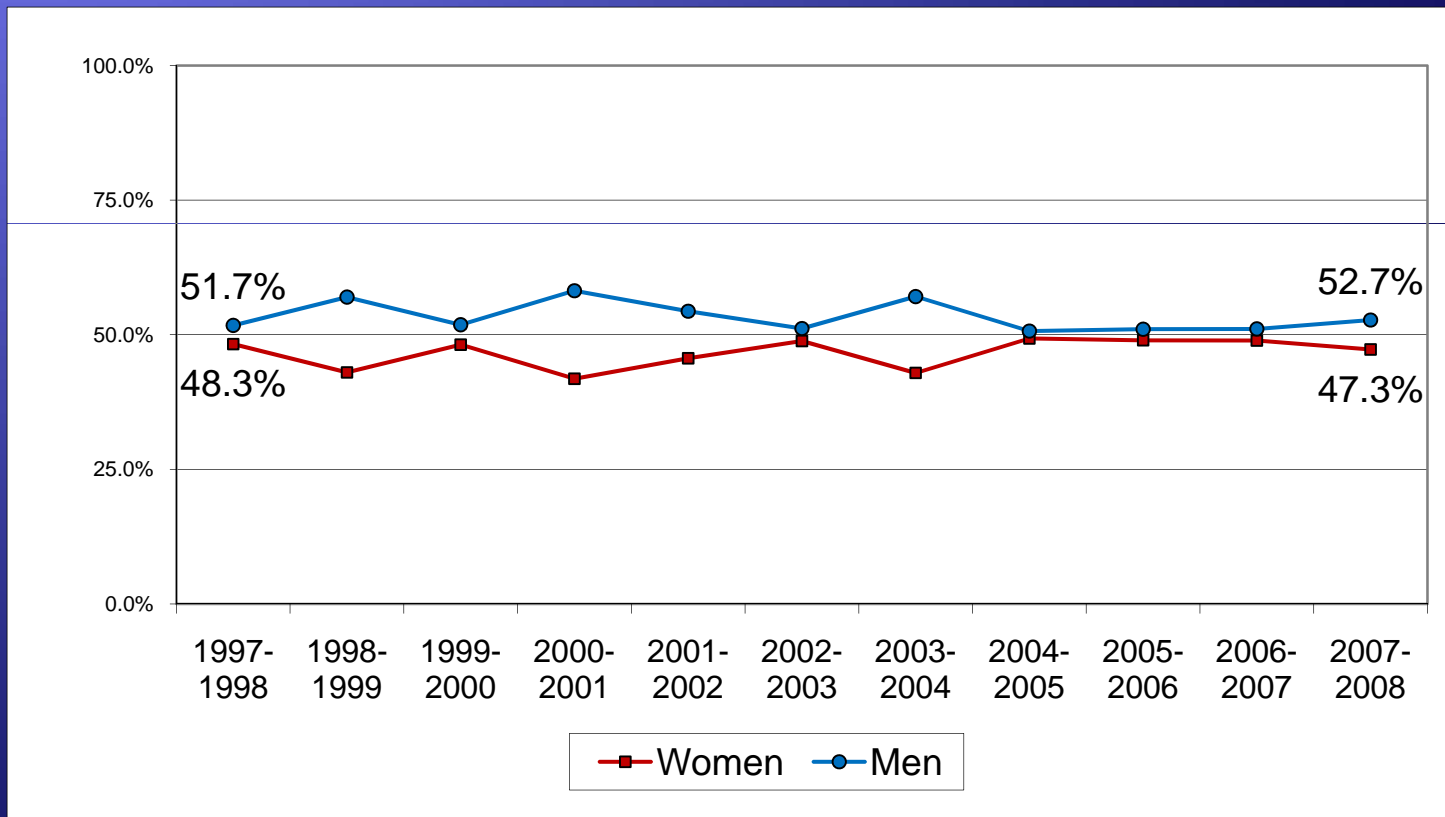
Important Changes in the Definition and Classification of Doctor's Degrees

- ◆ In Nebraska, professional practice doctor's degrees are awarded in:
 - ◆ Audiology
 - ◆ Physical therapy
 - ◆ Occupational therapy
 - ◆ Dentistry
 - ◆ Medicine
 - ◆ Pharmacy
 - ◆ Law

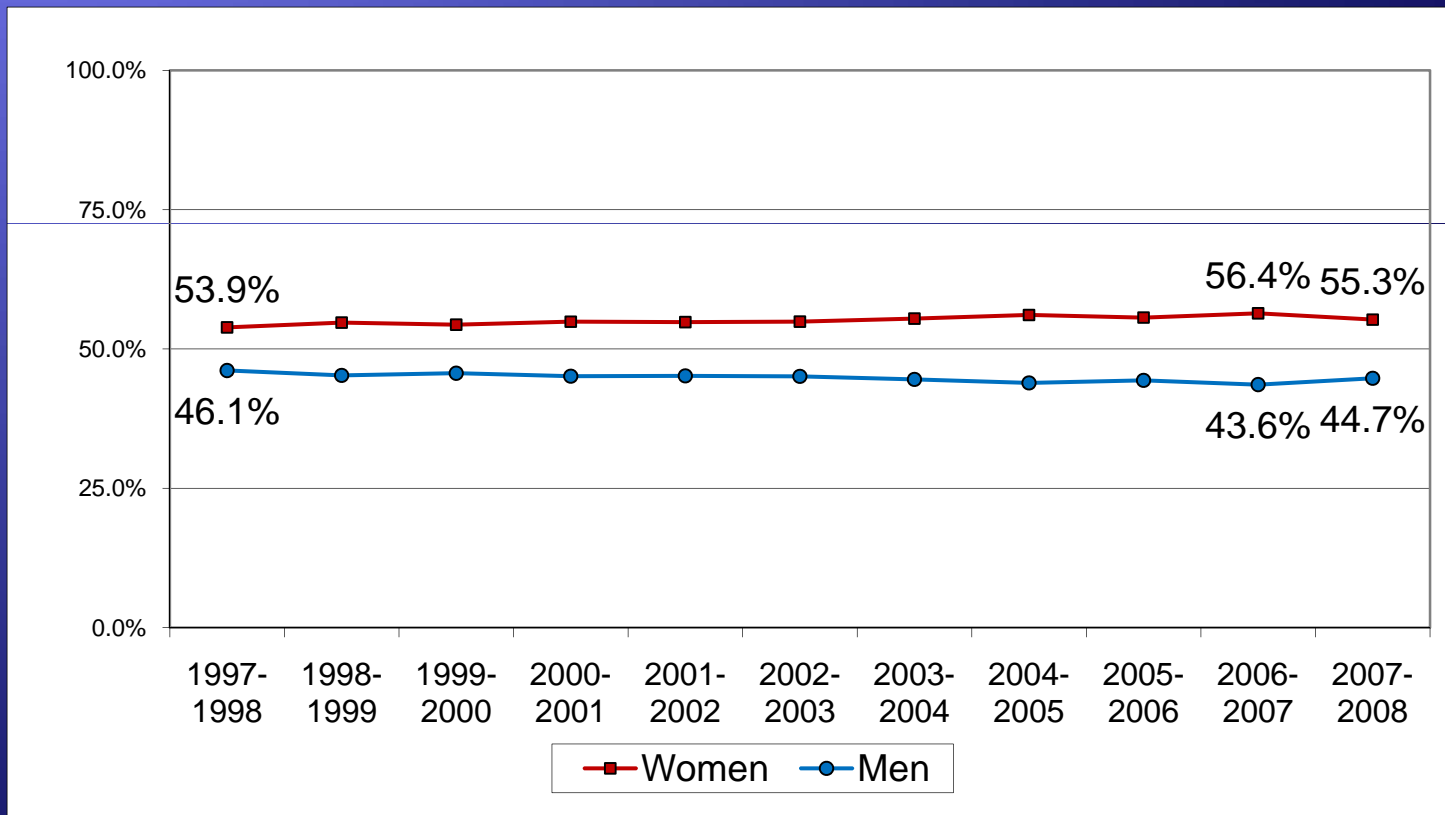
Percentage of Professional Practice Doctor's Degrees Conferred by Nebraska Institutions by Gender



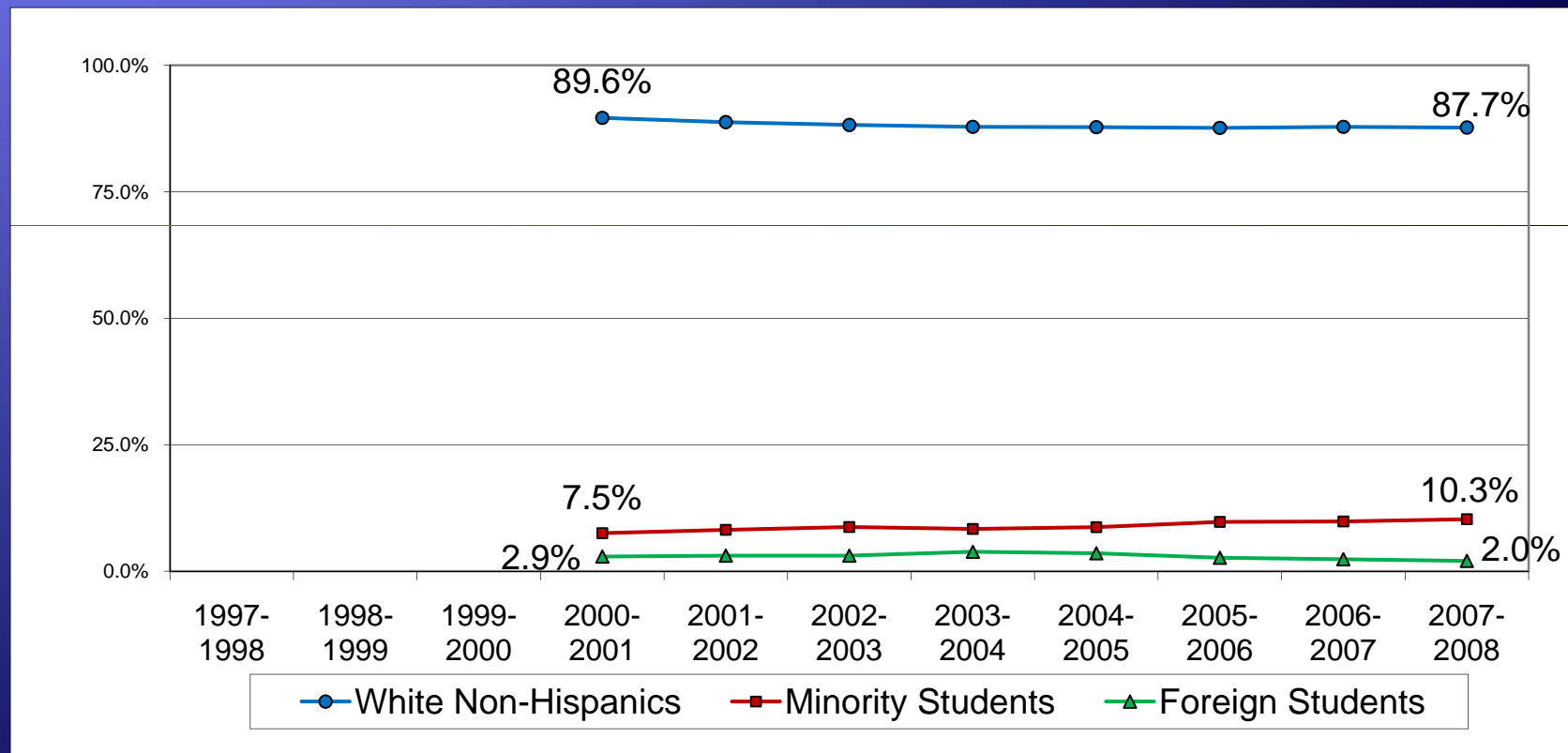
Percentage of Research/Scholarship Doctor's Degrees Conferred by Nebraska Institutions by Gender



Percentage of All Degrees Conferred by Nebraska Institutions by Gender



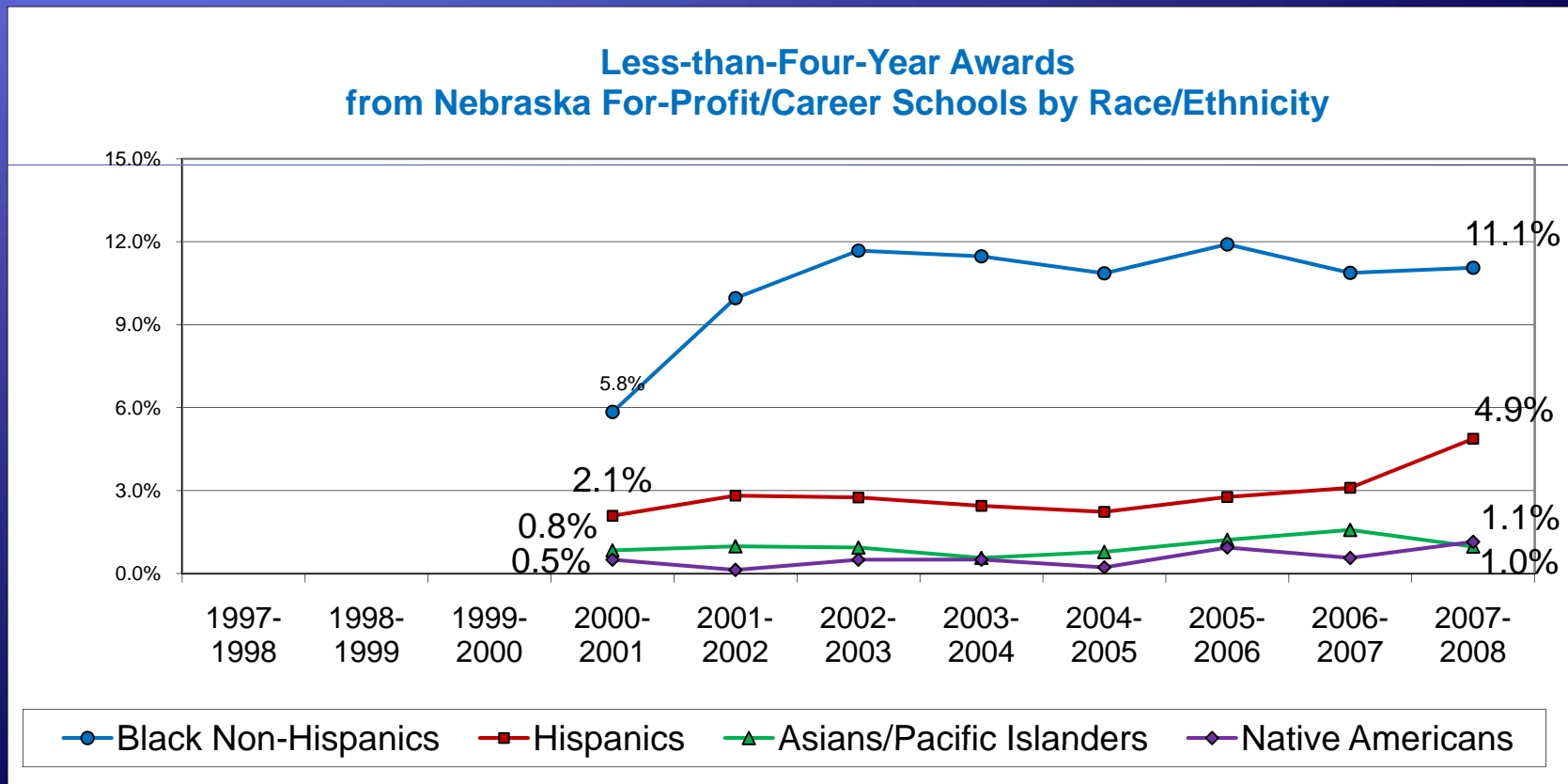
Percentage of Total Degree and Award Recipients at Nebraska Institutions by Race Ethnicity (Including For-Profit/Career Schools)



- ◆ Minorities continue to account for a slowly increasing share of the degrees and other awards conferred at Nebraska institutions.

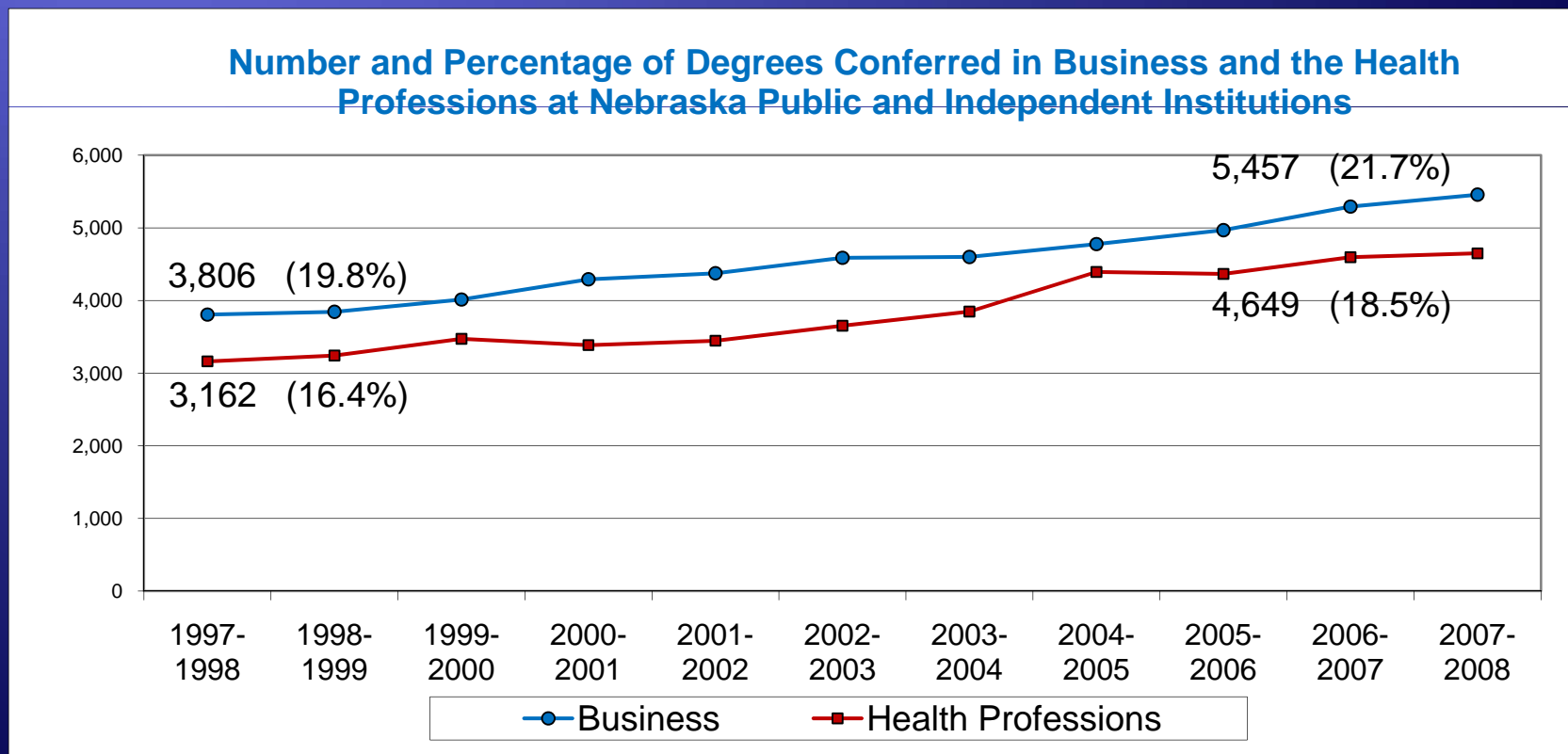
Percentage of Less-than-Four-Year Award Recipients at Nebraska For-Profit/Career Schools by Race Ethnicity

Total Minorities: **2000-01 9.2%** **2007-08 18.1%**



Number of Degrees Conferred by Nebraska Public and Independent Institutions (Not including For-Profit/Career Schools)

- ◆ Business and the health professions continue to account for the highest shares of the degrees and other awards conferred.



Questions?

Barbara A. McCuen, Ph.D.
Research Coordinator
CCPE – Nebraska

barbara.mccuen@nebraska.gov

(402) 471-0031

Duncan Hsu, Ph.D.
Database Manager
CCPE – Nebraska

duncan.hsu@nebraska.gov

(402) 471-0024

Kermit Spade
Data Analyst
CCPE – Nebraska

kermit.spade@nebraska.gov

(402) 471-8276

Dr. Joyce Simmons, Chair
Planning and Consumer Information Committee

Resolution Pertaining to the Review and Approval of Sections of the
Factual Look at Higher Education in Nebraska